

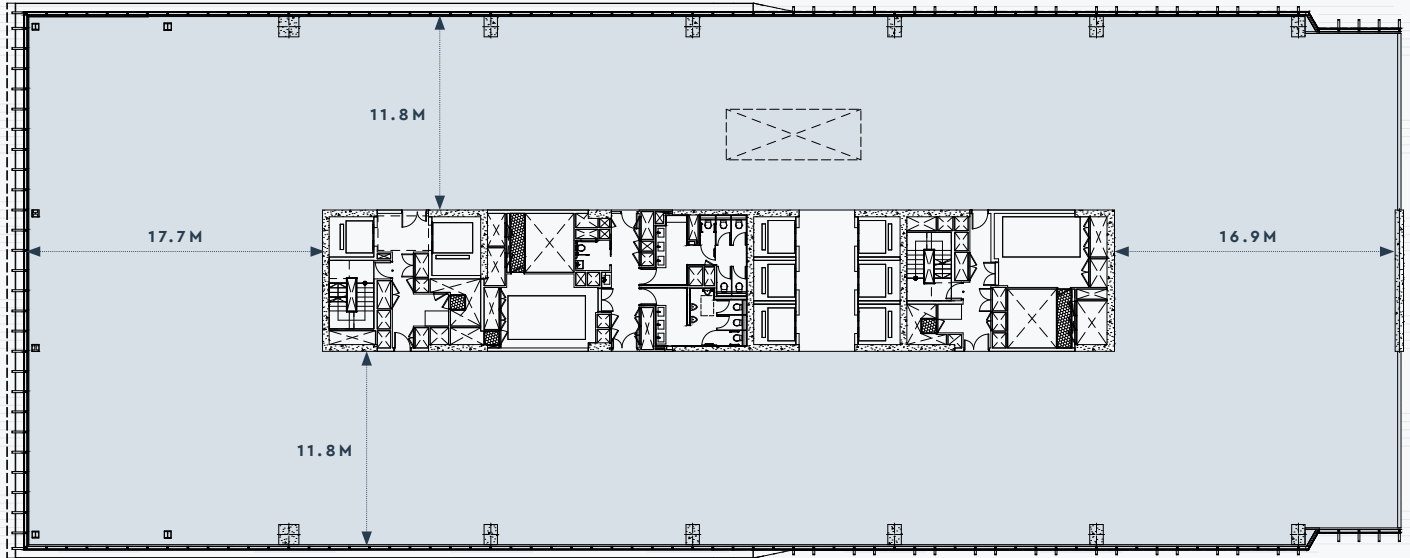
Typical Floor Plate

PENANG ROAD

TOWER 2

TOWER 1

TOWER 2



Approximate
Net Lettable Area

23,918 sqft

2,222 sqm

Tenant 1

Office	10
Work Stations	226
Meeting Rooms	9
Total Headcount	238
Density	9.3 sqm/pax

Proposed Test Fit

1-TENANT

PENANG ROAD

